

SOUTH PACIFIC SOJOURN

NEW ZEALAND RETURN, INCLUDING
VANUATU, NEW CALEDONIA &
NORFOLK ISLAND

EXPEDITION DOSSIER
7 – 16 NOVEMBER 2023



worldtravellers
Experience the world differently



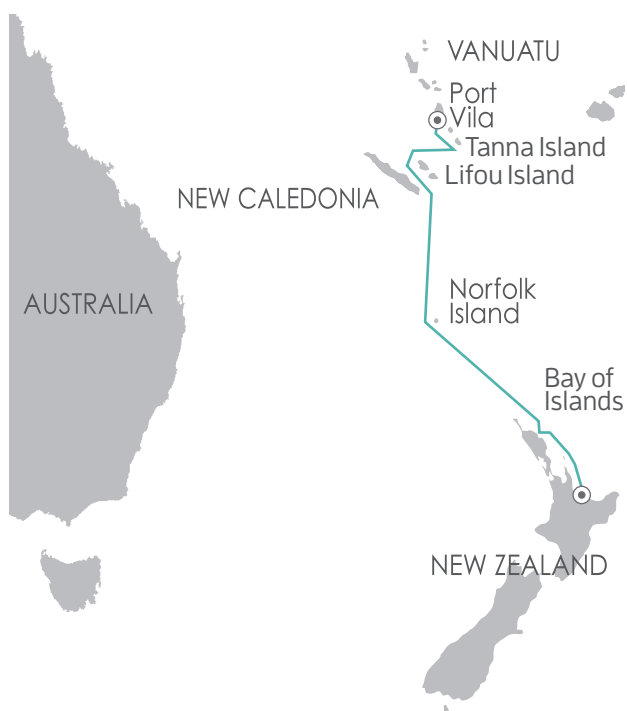
© Vanuatu Tourism Office



© Sugar Photographie/NCT



© Vanuatu Tourism Office



Set sail on an authentic 10-day adventure cruise as we traverse the cobalt blue waters of the South Pacific exploring the untouched beauty of remote tropical islands, white sand beaches and ancient cultures of Vanuatu and New Caledonia before visiting the quiet paradise of Australia's Norfolk Island and New Zealand's aptly named subtropical Bay of Islands.

Specially designed with cruise enthusiasts and adventurers in mind, South Pacific Sojourn carefully blends exciting island adventures with luxurious sea days spent poolside, in the Observation Lounge or watching your voyage unfold in the Bridge alongside your Captain. Discover a region rich with history and opportunities for exploration where life abounds both above and below the water while enjoying all-inclusive travel.

Highlights during the voyage include exploring the lively markets of Port Vila and snorkelling through a kaleidoscope of colourful reefs in New Caledonia's Lifou Island to uncover a myriad of exotic fish and coral species. Enjoy either a drive or hike to the top of Vanuatu's active volcano Mount Yasur on Tanna Island and discover historic UNESCO heritage sites on Australia's Norfolk Island along with over 40 species of endemic plants in the Norfolk Botanical Garden. Discover New Zealand's early history with a visit to the Treaty Grounds at Waitangi, location of the signing of the Treaty of Waitangi, and explore the iconic and historic Kiwi town of Russell in the Bay of Islands.

Adventure and all-inclusive luxury awaits aboard the sophisticated surrounds of our purpose-built 140-guest flagship *Heritage Adventurer* where house beer and wine is served alongside gourmet lunches and dinners as we sail the South Pacific on a voyage like no other.



ITINERARY

Day 1: Auckland, New Zealand

Fly from Auckland and arrive at Vanuatu's bustling capital city of Port Vila where contemporary hotels, restaurants and markets abound. Guests should make their way to the designated hotel where we will spend the first night of the expedition. This evening there will be an informal get-together at the hotel for dinner; an excellent opportunity to meet your fellow adventurers.

Day 2: Port Vila, Vanuatu

Enjoy breakfast at your leisure at the hotel followed by free time to explore Port Vila's rich cultural and natural wonders including the National Museum of Vanuatu, shopping at the Port Vila Markets, visit a local village or take in the grandeur of the multi-tiered 35 metre waterfall and azure pools of Mele Cascades nestled among lush rainforest. This afternoon, transfer to board *Heritage Adventurer*. The captain and crew will be waiting to greet you on arrival and show you to your cabin. You will have time to settle into your cabin and familiarise yourself with the ship; we will also take the opportunity to conduct a number of safety briefings. You are invited to join the crew in the Observation Lounge and up on the

Observation Deck as we set our course to Tana Island.

Day 3: Tanna Island

Today we have a full day to explore the paradisiacal outpost of Tanna Island. Located in the Pacific Ring of Fire, time moves at a slower pace on Tanna which is famously home to the world's most accessible active volcano Mount Yasur. Rising over more than 360 metres above sea level, it is said that Mount Yasur has been in a continuous state of activity since before Captain James Cook who first observed its activity in 1774. Traverse dirt roads and pass through friendly, self-sufficient cultural villages along the way for a short climb up to the summit where the volcano still demonstrates miniature eruptions, safe for guest viewing. Other highlights on Tanna Island include spectacular

snorkelling, incredible cultural encounters, stunning black and white sand beaches, natural hot springs and a Giant Banyan Tree which, at more than 100 metres wide and 80 metres high, is thought to be one of the world's largest.

Day 4: Lifou Island, New Caledonia

Today we discover a tropical slice of French paradise in the heart of the Pacific Ocean as we sail into New Caledonian waters – well beyond typical tourist routes and into the realm of legend and tradition. Lifou Island is one of three islands making up the pristine trifecta of the Loyalty Islands and the largest and most populous of the group. First sighted by French explorer Dumont d'Urville in 1857 it became a destination for Christian missionaries and several 19th Century Catholic church buildings still remain (including Notre Dame de Lourdes perched high on a hillside overlooking the ocean). Today it is rightly famous for its crystal clear water, sprawling coral gardens and abundant colourful marine life, and tangled tropical jungles supporting a myriad of birdlife including Red-bellied Fruit Doves, Grey-eared Honeyeaters, Lifou White-eyes and more. Experience traditions unchanged for generations during a thrilling cultural exchange at a local village and discover the gastronomic secret of Lifou's 'brown gold', the





island's highly sought after vanilla wowing taste buds around the globe.

Day 5: At sea

Relax and unwind following the recent days' adventures poolside, catch up with some reading, start processing your photos or simply find a quiet space and enjoy watching your voyage unfold.

Day 6: Norfolk Island, Australia

We have a full day to enjoy Norfolk Island, a former penal colony which Captain Cook encountered in 1774 and named after the Duchess of Norfolk. This morning we will have the opportunity to explore the beautiful St Barnabas Chapel. This five-year labour-of-love features mother-of-pearl inlays, stained glass windows and a spectacular vaulted timber ceiling. This afternoon discover the UNESCO World Heritage Site Kingston, a former brutal outpost for British prisoners and Australia's second oldest settlement, or visit the Norfolk Island Botanical Gardens with its 40 endemic, or unique, species including 15 plant species considered to be critically endangered. For the more active you may wish to walk in the National Park towards Mt Pitt. The tracks wind through lush palm forests and stands of Norfolk Island Pine leading to remarkable views of the island and ocean.

Days 7 & 8: At sea

Enjoy time aboard, relive the adventures of Norfolk Island and prepare for our arrival to New Zealand and the Bay of Islands.

Day 9: Bay of Islands, New Zealand

Wake this morning in the subtropical paradise of the Bay of Islands, home to more than 140 islands and stunning gold sand beaches. We have a full day set aside to explore and enjoy the Bay of Islands. It was here that much of New Zealand's early history, both Maori and European unfolded, including the signing of the Treaty of Waitangi. Visit the Treaty Grounds at Waitangi and discover the significance and stories surrounding the region. Later in the day there is an opportunity

to explore historic Russell, a town of New Zealand firsts including first seaport, European settlement, capital and licensed hotel. Perhaps enjoy a drink at the iconic Duke of Marlborough Hotel, explore the quiet coves and beaches at your own pace, snorkel crystal clear waters and walk remote white sand beaches and pristine native bush on uninhabited islands as we embrace this magical Kiwi paradise.

Day 10: Tauranga

Enjoy a sleep in or head out on deck to enjoy our arrival into the busy Port of Tauranga late morning. After final farewells, a complimentary transfer from the ship to Tauranga Airport awaits. We ask you not to book any onward flights until mid-afternoon to account for any delays and the time it takes to travel to the airport.

Note: During our voyage, circumstances may make it necessary or desirable to deviate from the proposed itinerary. This can include poor weather and opportunities for making unplanned excursions. Your Expedition Leader will keep you fully informed.

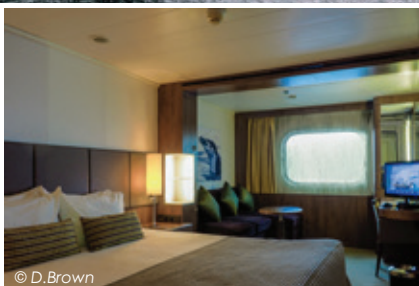




© D. Brown



© F. Wardle



© D. Brown

HERITAGE ADVENTURER

Heritage Adventurer is a true pioneering expedition vessel of exceptional pedigree often referred to as the 'Grande Dame of Polar Exploration'.

Purpose built for adventure in 1991 at Finland's Rauma shipyard and specifically designed for Polar exploration, *Heritage Adventurer* (formerly known as *MS Hanseatic*) is 124-metres long, boasts the highest passenger-ship ice-class rating (1A Super) and an impressive history of Polar and remote region exploration making her perfect for *Heritage Expeditions* signature experiential expedition travel.

Originally designed to accommodate 184 guests, we now welcome just 140 expeditioners to create a spacious, comfortable on board experience and continuation of the exceptional, personalised expedition experience synonymous with the company. While a fleet of 14 Zodiacs ensures

all guests are able to maximise their expedition experience. On board, enjoy stylish, sophisticated accommodations spanning 4 decks, visit the captain and crew in the Bridge with our Open Bridge Policy and dine on gourmet fare from leading chefs.

Watch your adventure unfold from numerous spectacular indoor and outdoor viewing locations including *Heritage Adventurer's* famed Observation Lounge resplendent with 270-degree views and join our world-renowned team of naturalists, botanists, historians and experts as they interpret the natural and human history discovered during each voyage, as well as hosting regular lectures.

And should you require a little R&R, unwind in the library, pool, gym, hot tub, sauna and steam room, indulge in some retail therapy or find a quiet place to enjoy a coffee or cocktail from the café and bar.

DATES

7 – 16 November 2023

PRICES

Heritage Suite **\$8,638 pp***
Located on Deck 6, Heritage Suites are an expansive 44m² and feature large double panoramic windows, king bed, large living area with a sofa, coffee table and chairs and grand marble bathroom with a double basin, bathtub and shower, large writing desk, floor to ceiling cabinetry for storage and a flat screen entertainment system.

Worsley Suite **\$6,888 pp***
Located on Deck 6, Worsley Suites are a spacious 22m² and feature large panoramic windows, king or two single beds, comfortable chaise-style lounge suite, writing desk, private en-suite with shower, ample storage and a flat screen entertainment system.

Superior Single **\$6,988 pp***
Superior Single Cabins on Deck 5 are a spacious 22m² and feature large panoramic windows, king bed, comfortable lounge, writing desk, private en-suite with shower, ample storage and a flat screen entertainment system.

Superior Triple **\$4,888 pp***
Superior Triple Cabins on Deck 5 are a spacious 22m² and feature large panoramic windows, two single beds and one Pullman bed which folds down from the wall, comfortable lounge, writing desk, private en-suite with shower, ample storage and a flat screen entertainment system.

Superior Deck 5 **\$5,633 pp***
Superior Cabins on Deck 5 are a spacious 22m² and feature large panoramic windows, king or two single beds, comfortable lounge, writing desk, private en-suite with shower, ample storage and a flat screen entertainment system.

Superior Deck 4 **\$5,388 pp***
Superior Cabins on Deck 4 are a spacious 22m² and feature large panoramic windows, king or two single beds, comfortable lounge, writing desk, private en-suite with shower, ample storage and a flat screen entertainment system.

Main Deck Single **\$6,568 pp***
Main Deck Single Cabins on Deck 3 are a spacious 22m² and feature two porthole windows, king bed, comfortable lounge, writing desk, private en-suite with shower, ample storage and a flat screen entertainment system.

Main Deck Triple **\$4,593 pp***
Main Deck Triple Cabins on Deck 3 are a spacious 22m² and feature two porthole windows, two single beds and one Pullman bed which folds down from the wall, comfortable lounge, writing desk, private en-suite with shower, ample storage and a flat screen entertainment system.

* The price listed includes the additional local payment of NZ\$300 (All prices are per person in NZ\$).

PRICE INCLUDES

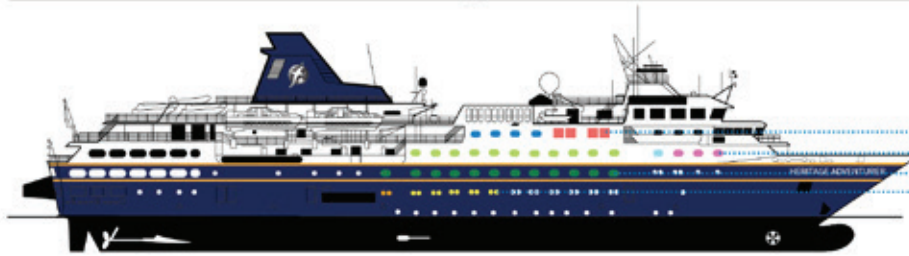
Flight from Auckland to Port Vila, local payment, pre/post cruise transfers, one night hotel accommodation in a twin share room (incl. dinner/breakfast), all on board ship accommodation with meals, house beer, wine and soft drinks with lunch and dinner and all expedition shore excursions.

PRICE EXCLUDES

All items of a personal nature, laundry, drinks, gratuities. International/domestic flights (with exception to the included flight from Auckland to Port Vila), visas and travel insurance.

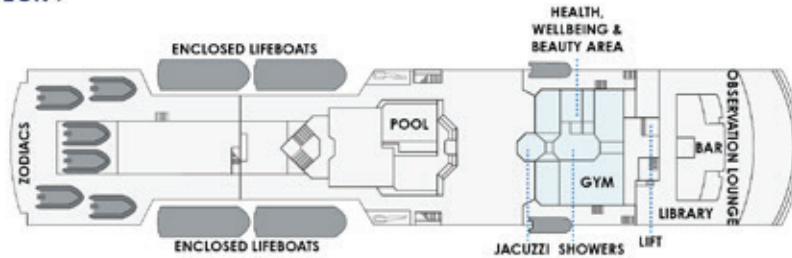
31/10/2023

Heritage Adventurer Deck Plan

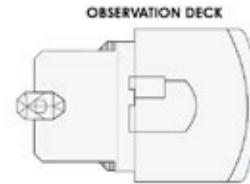


DECK 6: ● WORSLEY SUITE ● HERITAGE SUITE
DECK 5: ● SUPERIOR ● SUPERIOR TRIPLE ● SUPERIOR SINGLE
DECK 4: ● SUPERIOR
DECK 3: ● MAIN DECK TRIPLE ● MAIN DECK SINGLE

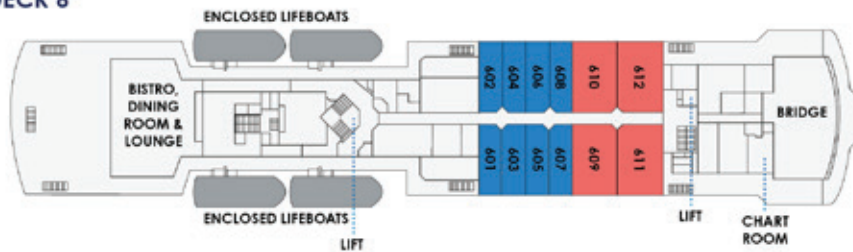
DECK 7



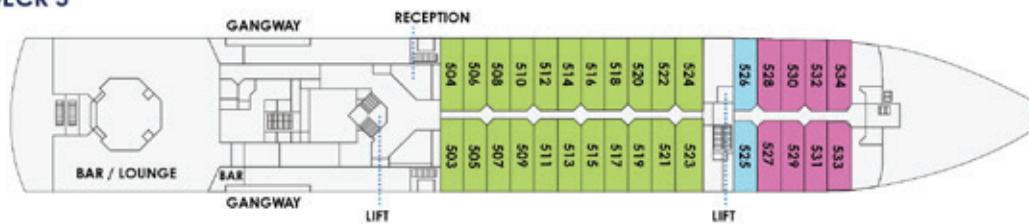
DECK 8



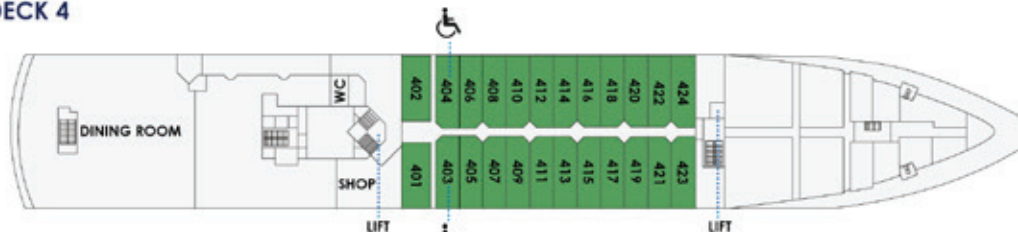
DECK 6



DECK 5



DECK 4



DECK 3



DECK 2



SUITE CATEGORIES

- | | | | |
|------------------|-------------------|-------------------|--------------------|
| ● HERITAGE SUITE | ● SUPERIOR SINGLE | ● DECK 4 SUPERIOR | ● MAIN DECK SINGLE |
| ● WORSLEY SUITE | ● DECK 5 SUPERIOR | | ● MAIN DECK TRIPLE |
| | ● SUPERIOR TRIPLE | | |



worldtravellers
Experience the world differently

For bookings or more information contact your local WorldTravellers store or
email: info@worldtravellers.co.nz | www.worldtravellers.co.nz